

Reading Room - some exciting new possibilities

Our village is extraordinarily fortunate to have the Reading Room as an asset and a public building that can be put to a wide variety of uses. It is solidly built, in good order and well located in the immediate proximity of the pub and the church. Many other villages of our size must be envious of a facility of this size and versatility.

The Reading Room Committee is considering whether some changes could be made to the Reading Room to optimise its use and to better manage the storage of tables and chairs and other items such as stage equipment, as well as improving access arrangements between the upper floor and the lower floor.

With the very considerable help of Kevin Shotter, an architect resident in the village, we have started a project to see what changes and improvements could be made and how they might benefit not only those who use the Reading Room regularly, but also the entire village. We have established with certainty the extent of the legal title of the Reading Room and our ownership of what is sometimes called "The Pound", that is the ground between the South East elevation of the Reading Room and the wall of the pub toilets.

Sometimes these kinds of projects set off by asking the question "what can we afford?"

We are deliberately not doing that. We are asking the questions "what do we want" and "what is achievable" in practical planning and construction terms. When we have some answers, and undoubtedly there will be a range of answers, we can then start to see whether the changes we have settled upon can be funded. Depending upon available funding, we may have to rein in some of our ambitions, but that comes later.

Despite Covid -19 there are still funding opportunities out there. Within our Committee we have the skills to seek out those funds.

This will not be a quick project, nor does it need to be. It is more important that we establish the best way forward for the village. In view of this you will see on separate pages a series of feasibility scale drawings produced by Kevin Shotter of Synergy. We are enormously grateful to him.

What we should like you to do is let us have your comments on these drawings. Many of you will remember the exercise we undertook in the Reading Room when work started on the creation of the Village Plan and you were asked then to attach Post It notes with your comments upon the displays on the boards in the Reading Room. We shall do that again for this project.

We are also providing the drawings in digital form on the Reading Room's Facebook page and on the Parish Council website, Reading Room pages. We shall seek your comments in this way as well.

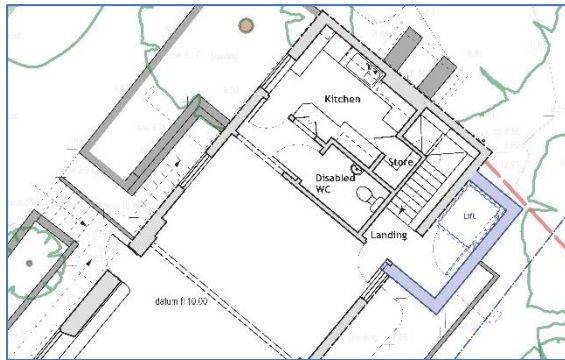
Finally, there may be some who would like to provide lengthier responses than can be squeezed on to a Post It note.

Responses by email to KRR Treasurer on kingstonrrtreasurer@gmail.com

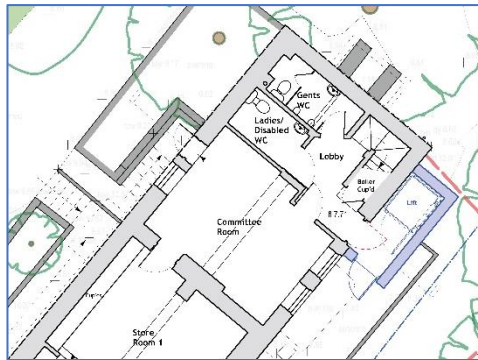
Your Committee looks forward to receiving your feedback for this exciting new project.

Andy Summer Nutting, Chairman.

Option A – This shows a minimal extension to accommodate a wheelchair platform lift. This leaves the floor layouts of the existing building as existing except for the connections to the lift enclosure.

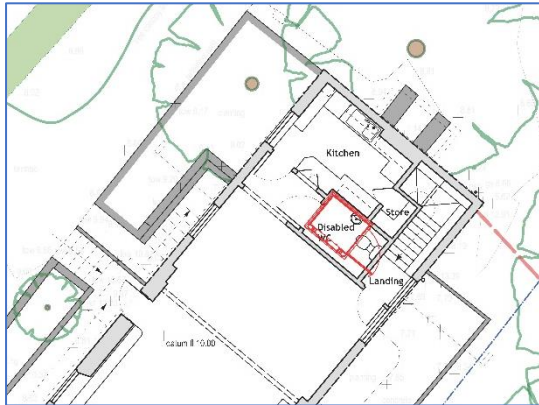


Reading Room Option A – Upstairs

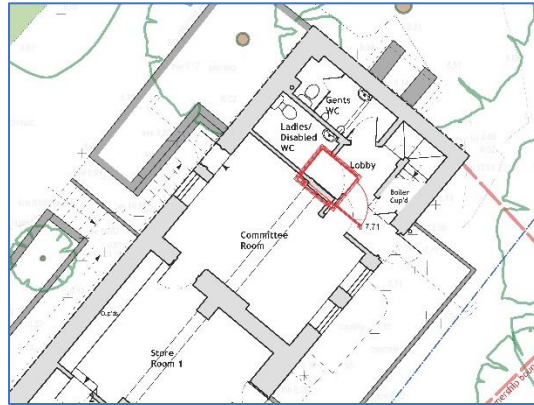


Downstairs

Option B - This highlights the problem of trying to locate a lift within the envelope of the existing building. As an example, the lift is shown in the existing first floor WC so that access to it can be from the existing staircase enclosure. You will see that this location does not work with the existing ground floor layout/structure.



Reading Room Option B – Upstairs

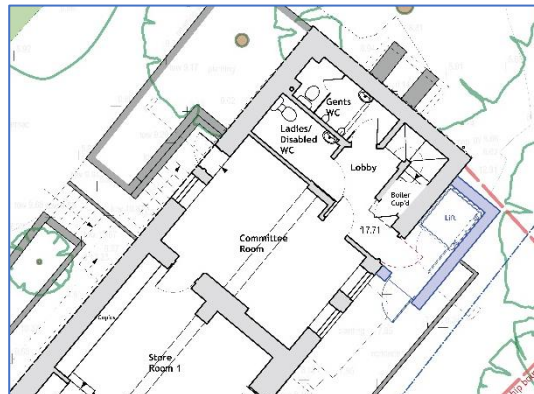


Downstairs

Option C - This is the same as Option A but with the existing disabled WC at first floor level removed to give more hall space. The existing ladies' WC is laid out as a disabled WC so, with a lift, an additional disabled WC would not be needed at ground floor level

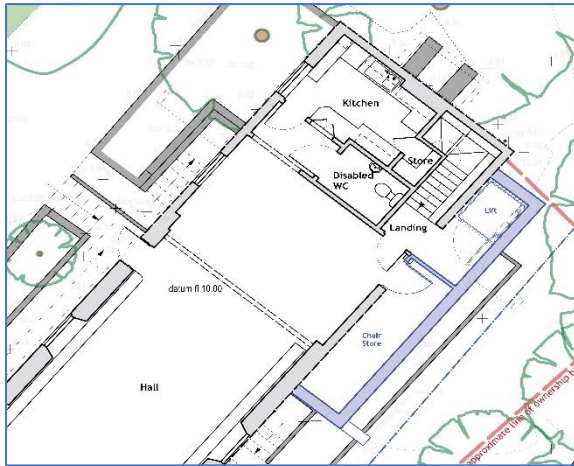


Reading Room Option C – Upstairs

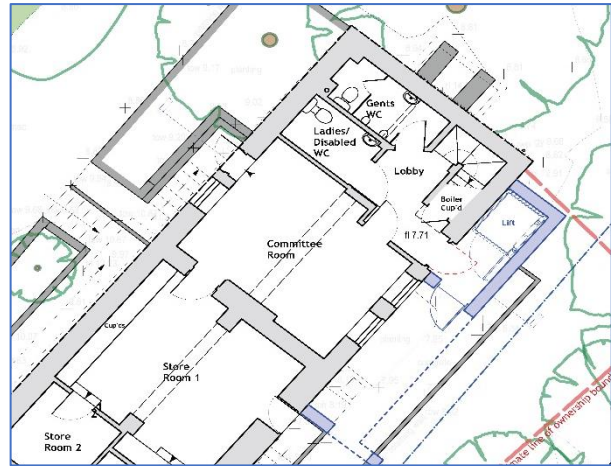


Downstairs

Option D - This is the same as Option A but with a larger extension as first floor level to accommodate a chair store.

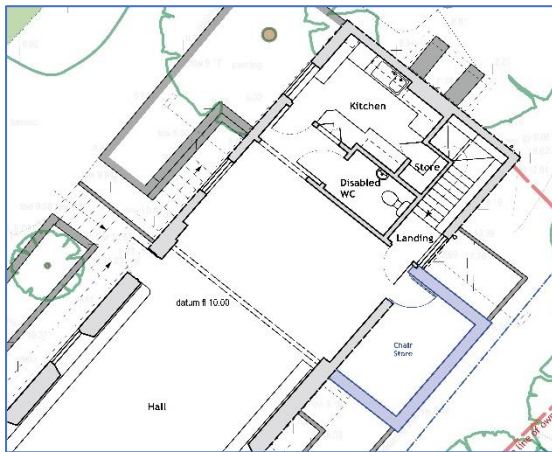


Reading Room Option D – Upstairs

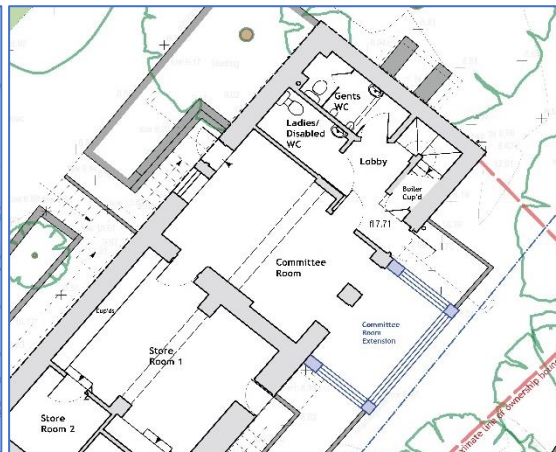


Downstairs

Option E - This proposal is based on the existing disabled WC being retained at first floor level with an extension to accommodate a chair store at first floor level and an extension to the existing committee room at ground floor level.



Reading Room Option E – Upstairs

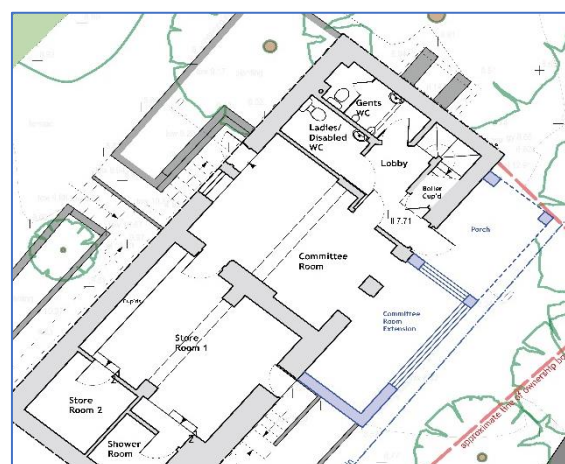


Downstairs

Option F - This proposal shows the extension maximised without obstructing the existing ground floor external doors and the existing highway drain. The larger extension at first floor level could accommodate a larger kitchen with a serving hatch, or a much larger chair store. Ground floor level shows an extension to the committee room similar to Option E.



Reading Room Option F – Upstairs



Downstairs